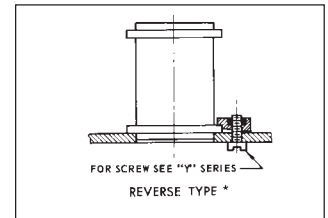
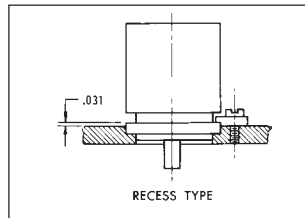
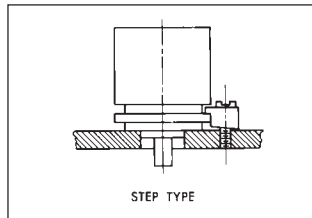
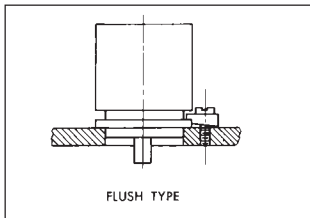
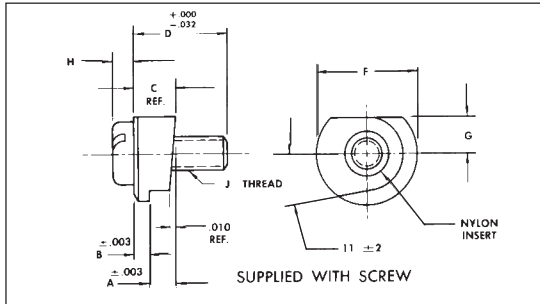
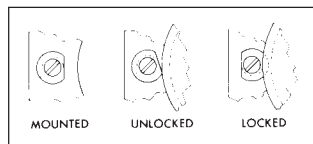
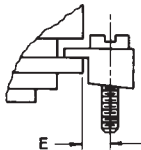


# MOTOR MOUNT CLEATS

Instant Nulling (Zeroing), Quick Releasing, Self Locking



| TO DETERMINE BOLT CIRCLE FOR CLEAT LOCATIONS |  |
|--|--|
| FOR CLEAT NO.                                | USE THE LARGER OF 2 TEST BOLT CIRCLES  |
| L3-(1-12)<br>L3-(30-31)                      | ADD .270" (2 x E) TO MAX. FLANGE DIA. OR<br>ADD .400" TO MAX. DIA. OF BASE OF GROOVE |
| L3-(20-24)                                   | ADD .192" (2 x E) TO MAX. FLANGE DIA. OR<br>ADD .275" TO MAX. DIA. OF BASE OF GROOVE |



## SPECIFICATIONS

### MATERIAL

Clamp: Sintered stainless steel Type 316; tensile strength 60,000 psi; shear strength 25,000 psi.

Screw: Slotted pan head CRES per MS-35233 and MS-35234.

Insert: Nylon (Polyamide) Type 1 per ASTM D 4066. Natural color.

### FINISH

Screw: Treated per MIL-S-5002.

Clamp: As cast and tumbled.

Operating Temperature Range: -55°C to +177°C.

Vibration: 5 to 2000 cps at 15 g's acceleration with size 15 synchro.

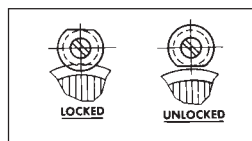
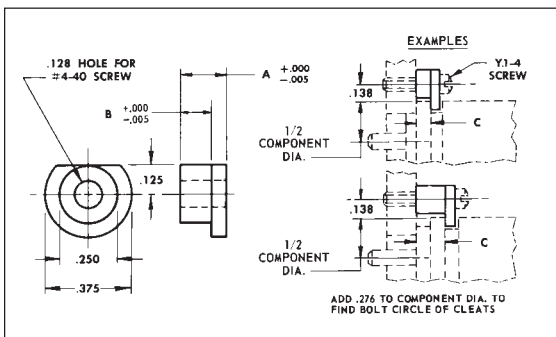
Shock: 2000 ft. lb. shock, size 15 synchro per MIL-S-901.

Meets all requirements of MIL-E-5272C and MIL-S-901.

| Type Mount     | A    | B    | C    | D    | E    | F    | G    | H         | J     | Part No. |
|----------------|------|------|------|------|------|------|------|-----------|-------|----------|
| Flush & Recess | .031 | .040 | .071 | .312 |      |      |      |           |       | L3-1     |
| Flush          | .062 | .040 | .102 | .312 |      |      |      |           |       | L3-2     |
| Flush          | .062 | .050 | .112 | .375 |      |      |      |           |       | L3-3     |
| Flush          | .062 | .063 | .125 | .375 |      |      |      |           |       | L3-4     |
| Flush          | .093 | .040 | .133 | .375 |      |      |      |           |       | L3-6     |
| Flush          | .093 | .050 | .143 | .375 | .135 | .390 | .125 | .068 Max. | #4-40 | L3-7     |
| Flush          | .093 | .063 | .156 | .375 |      | .385 |      |           |       | L3-8     |
| Step           | .125 | .050 | .175 | .375 |      |      |      |           |       | L3-9     |
| Step           | .156 | .040 | .196 | .375 |      |      |      |           |       | L3-10    |
| Step           | .225 | .063 | .288 | .437 |      |      |      |           |       | L3-11    |
| Flush          | .250 | .063 | .312 | .625 |      |      |      |           |       | L3-12    |
| Flush & Recess | .031 | .040 | .071 | .250 |      |      |      |           |       | L3-20    |
| Flush          | .062 | .040 | .102 | .250 |      |      |      |           |       | L3-22    |
| Flush          | .093 | .040 | .133 | .312 | .096 | .265 | .091 | .053 Max. | #2-56 | L3-23    |
| Step           | .125 | .040 | .165 | .312 |      | .260 |      |           |       | L3-24    |
| Reverse        | .062 | .063 | .125 | *    | .135 | .390 | .125 | *         | #4-40 | L3-30*   |
| Reverse        | .093 | .063 | .156 | *    |      | .385 |      |           |       | L3-31*   |

\*Supplied Less Screw

# MOTOR MOUNT CLEATS



| A                          | B    | Order Screw Separately | C    | Part No. |
|----------------------------|------|------------------------|------|----------|
| 300 Series Stainless Steel |      |                        |      |          |
| .100                       | .052 | Y1-4-T                 | .062 | L2-1     |
| .131                       | .081 | Y1-4-U                 | .093 | L2-2     |
| .160                       | .109 | Y1-4-U                 | .125 | L2-3     |
| .288                       | .238 | Y1-4-W                 | .250 | L2-4     |
| .113                       | .063 | Y1-4-U                 | .072 | L2-5     |
| .162                       | .112 | Y1-4-U                 | .125 | L2-6     |
| .193                       | .143 | Y1-4-V                 | .156 | L2-7     |
| .263                       | .213 | Y1-4-W                 | .225 | L2-8     |
| 400 Series Stainless Steel |      |                        |      |          |
| .100                       | .052 | Y1-4-T                 | .062 | L2-11    |
| .131                       | .081 | Y1-4-U                 | .093 | L2-12    |
| .160                       | .109 | Y1-4-U                 | .125 | L2-13    |
| .162                       | .112 | Y1-4-U                 | .125 | L2-16    |
| .193                       | .143 | Y1-4-V                 | .156 | L2-17    |
| .263                       | .213 | Y1-4-W                 | .225 | L2-18    |